

# HOME SAFE FOR THE HOLIDAYS...

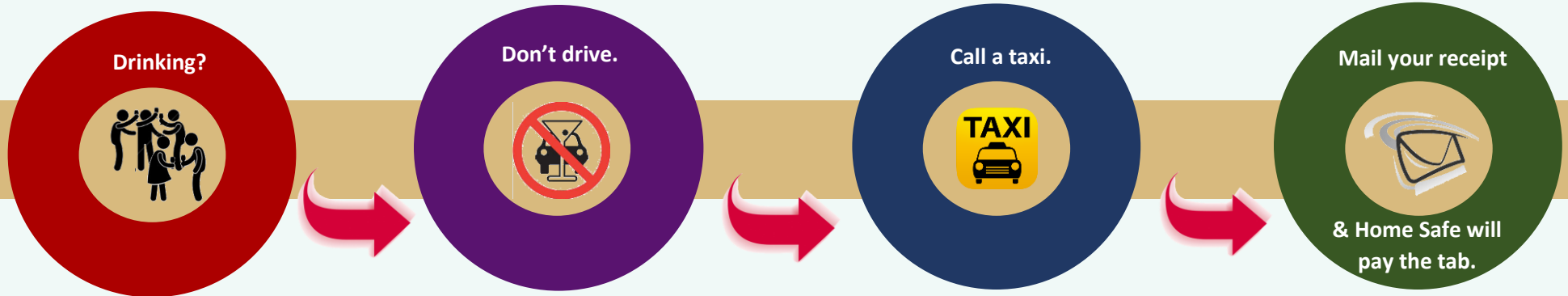
**Drinking and driving simply do not go together.**

Alcohol affects our attentiveness and ability to make quick decisions on the road, react to changes in the environment and execute specific, often difficult maneuvers behind the wheel.

**If you have been drinking, don't get behind the wheel of a vehicle.  
Call a cab for a safe ride home!**



Home Safe makes it easy!



Reimbursement is limited to 3 times per calendar year.

**For more information, contact the MAP at 1-888-MAP-6637 or  
[www.lytleeap.com](http://www.lytleeap.com)**

